

Paper Reference(s) 1BI0/1F
Pearson Edexcel Level 1/Level 2 GCSE (9–1)

Biology
PAPER 1
Foundation Tier

Tuesday 16 May 2023 – Morning

Diagram Booklet

In the boxes below, write your name, centre number and candidate number.

Surname					
Other names					
Centre Number					
Candidate Number					

INSTRUCTIONS

There may be spare copies of some diagrams in case you need them.

THIS DIAGRAM BOOKLET MUST BE RETURNED WITH THE QUESTION PAPER AT THE END OF THE EXAMINATION.

Contents

Page

5	Question 1(a)
6	Question 1(b)(i)
7	Question 1(b)(ii)
8	Question 2(a)(i)
9	Question 2(a)(ii)
10	Question 2(b)(i)
11	Question 3(a)
12	Question 4(b)
13	Question 4(c)
14	Question 5(a)
15	Question 5(a)(ii)
16	Question 5(b)
17	Question 6(b)
18	Question 7
19	Question 7(c)(ii)
20	Question 7(d)
21	Question 8(c)
22	Question 9(a)
23	Question 9(c)
24	Question 10(a)
25	Question 10(a)(iii)
26	Question 10(b)
27	Question 10(c)(i)

(continued on the next page)

(Turn over)

Contents continued.

Spare Copies

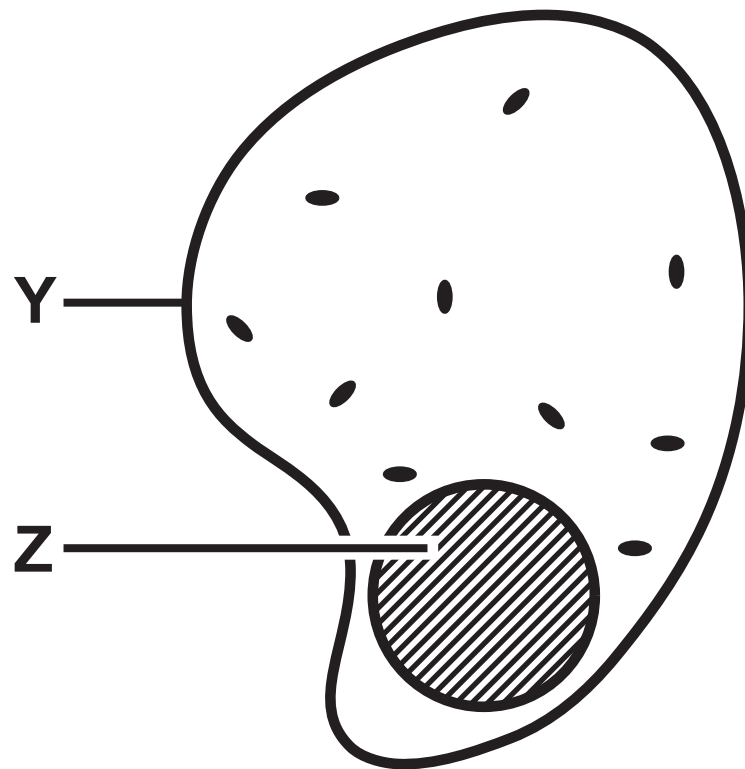
28 Question 1(b)(ii)

29 Question 4(c)

30 Question 6(b)

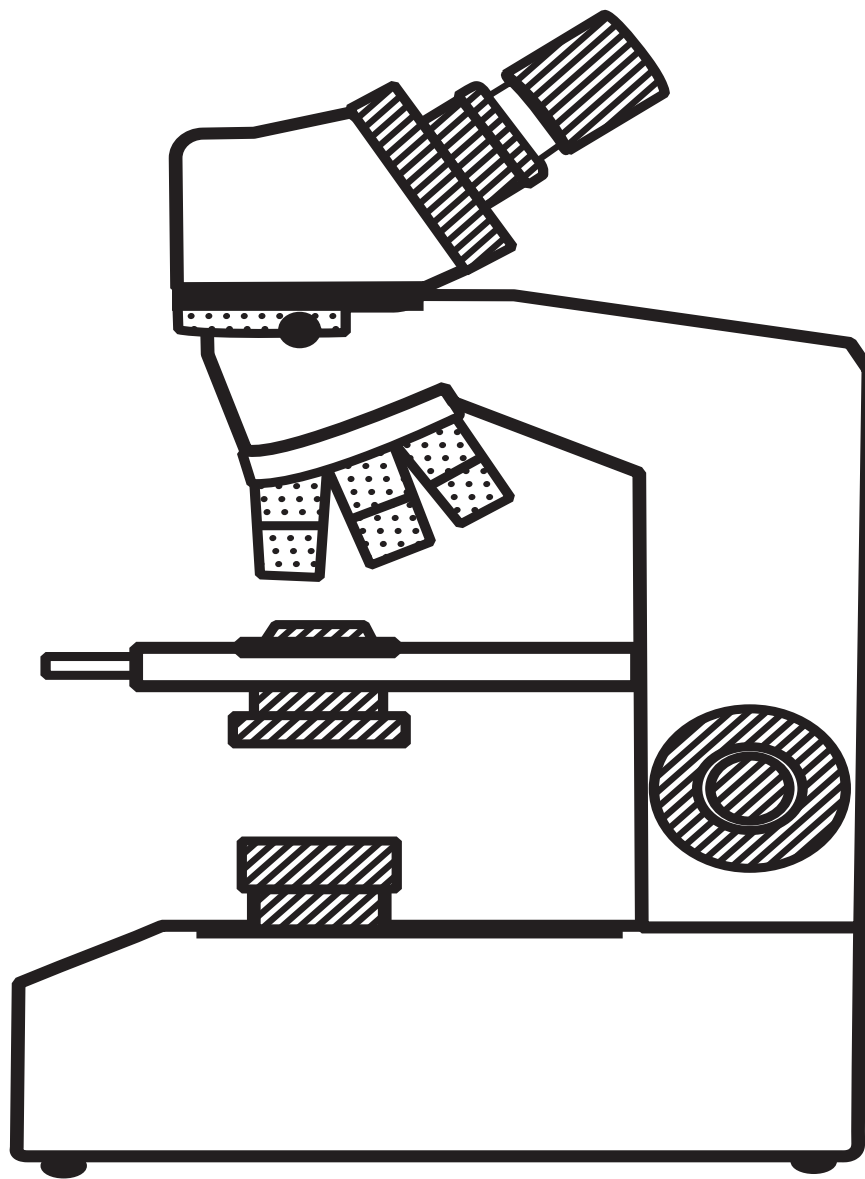
Question 1(a)

FIGURE 1



Question 1(b)(i)

FIGURE 2



Question 1(b)(ii)

FIGURE 3

**part of the
microscope**

eyepiece

stage

function

● to place a slide on

● to carry the
microscope

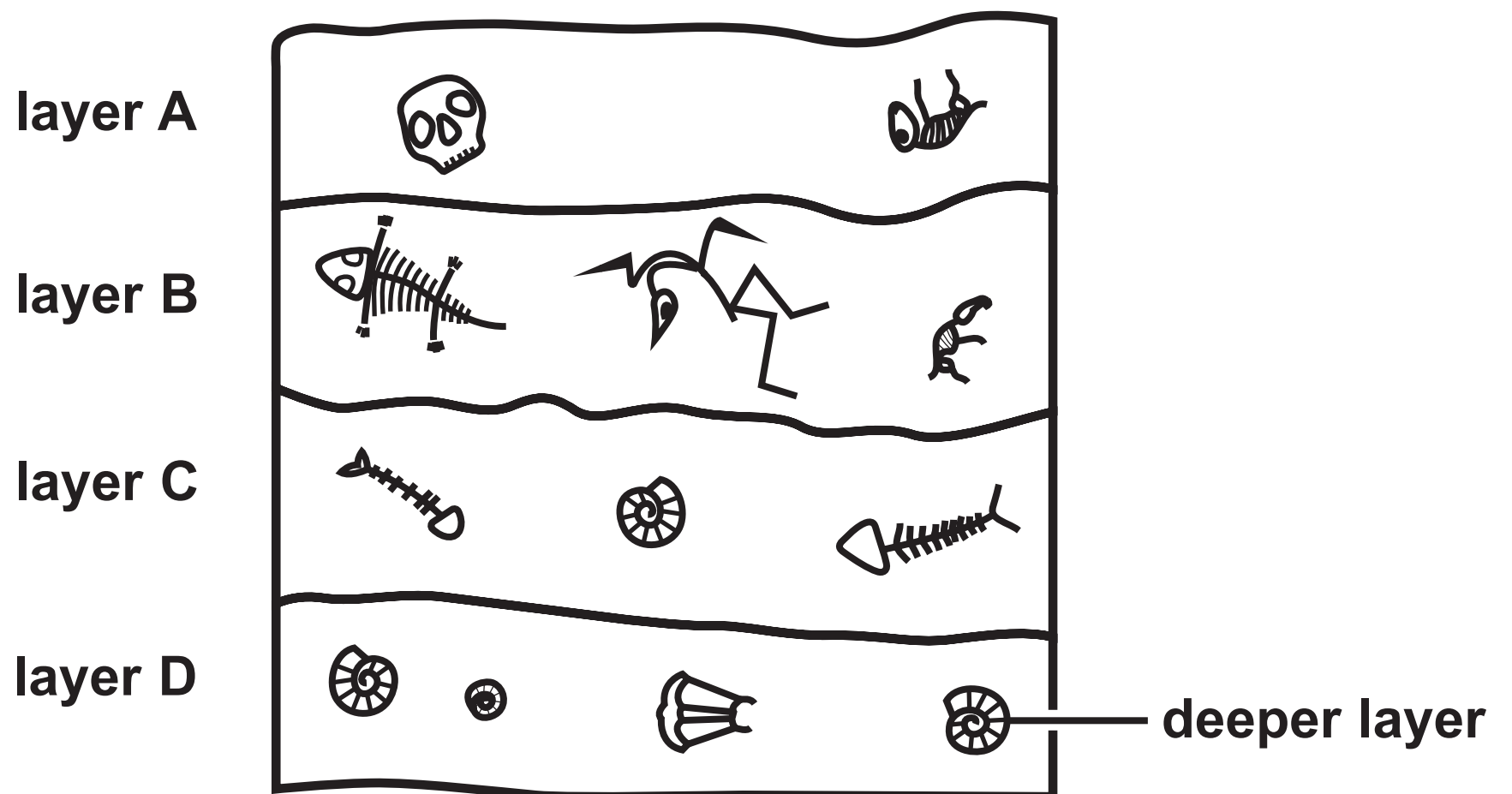
● to make the cells
look brighter

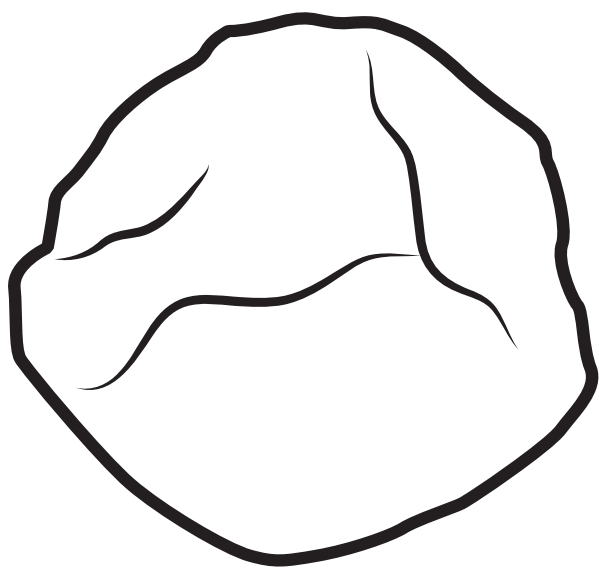
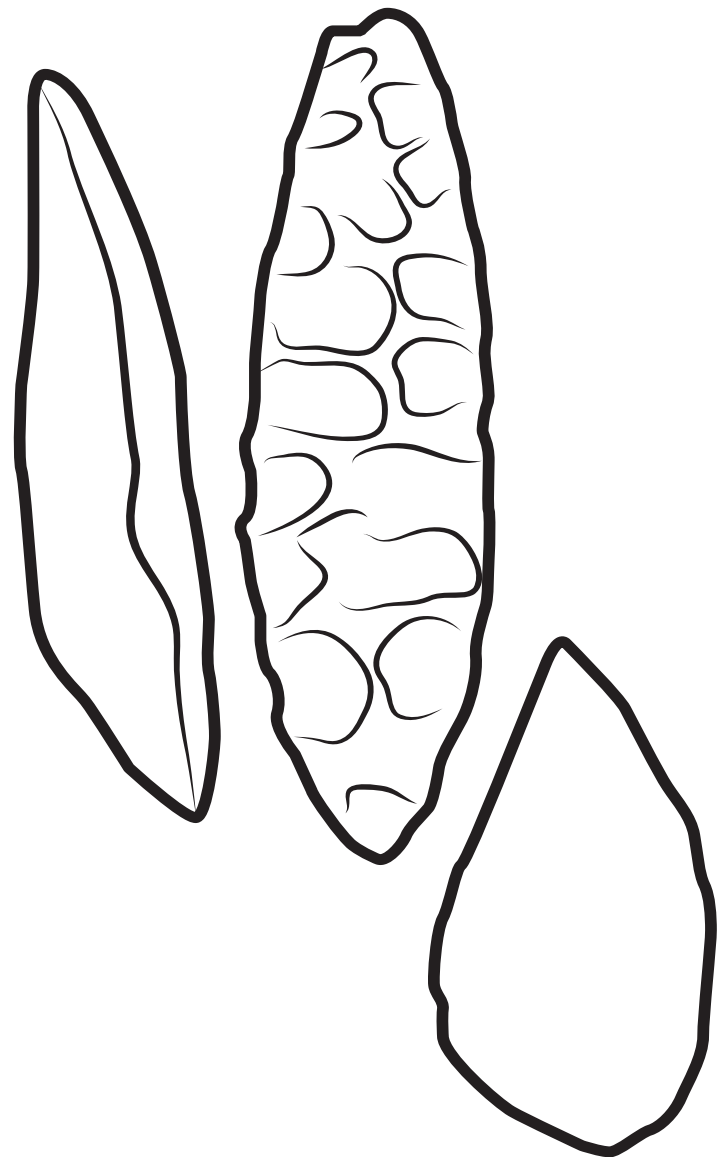
● to look through to
see the cells

● to reflect light
onto the cells

Question 2(a)(i)

FIGURE 4



Question 2(a)(ii)**FIGURE 5****tool A****tools B, C and D**

Question 2(b)(i)

asexual

characteristics

evidence

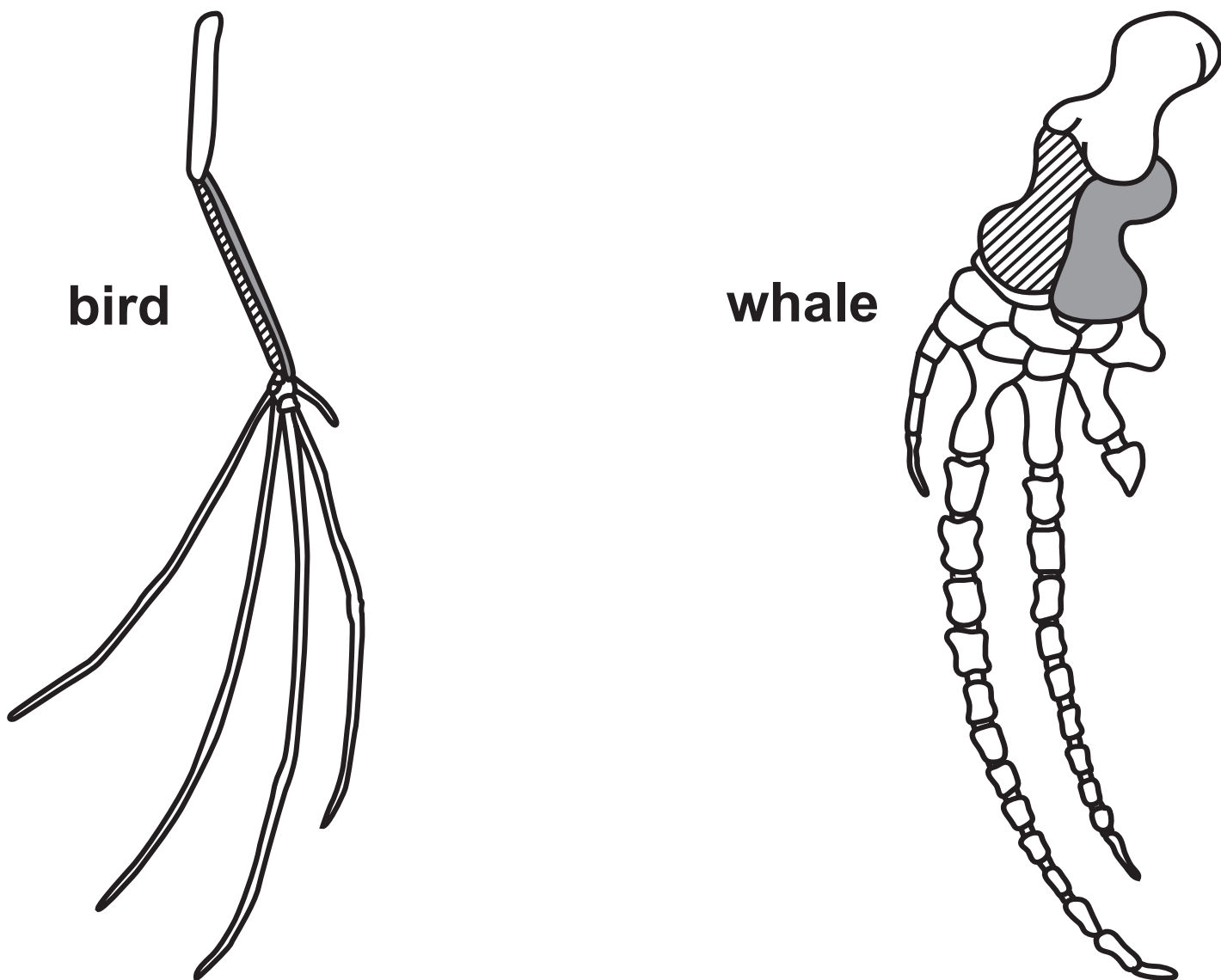
ideas

inherited

selective

Question 3(a)

FIGURE 6



Question 4(b)

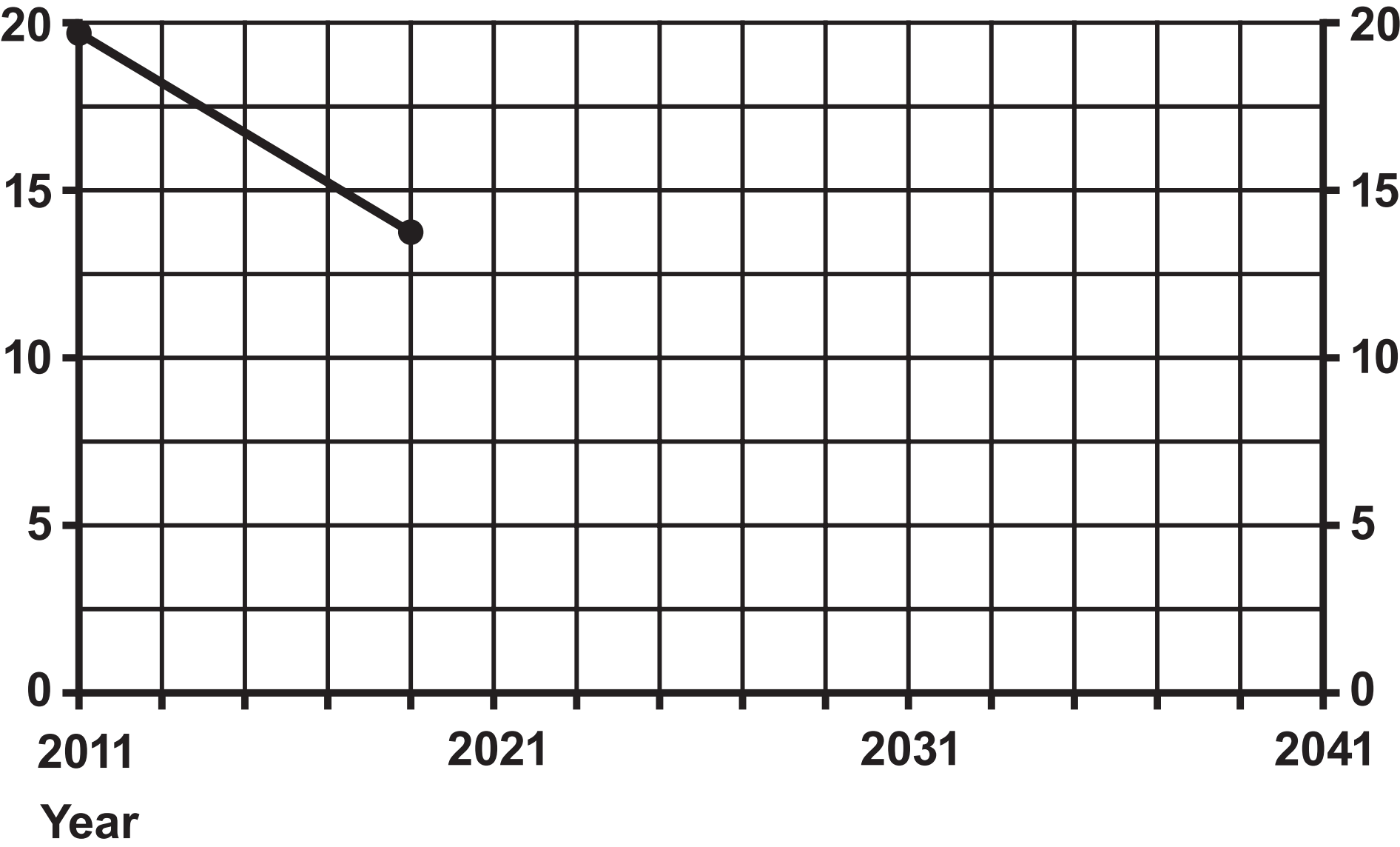
FIGURE 7

BMI range	weight description
18·5 to 24·9	healthy weight
25·0 to 29·9	overweight
30·0 to 39·9	obese
40 or more	severely obese

Question 4(c)

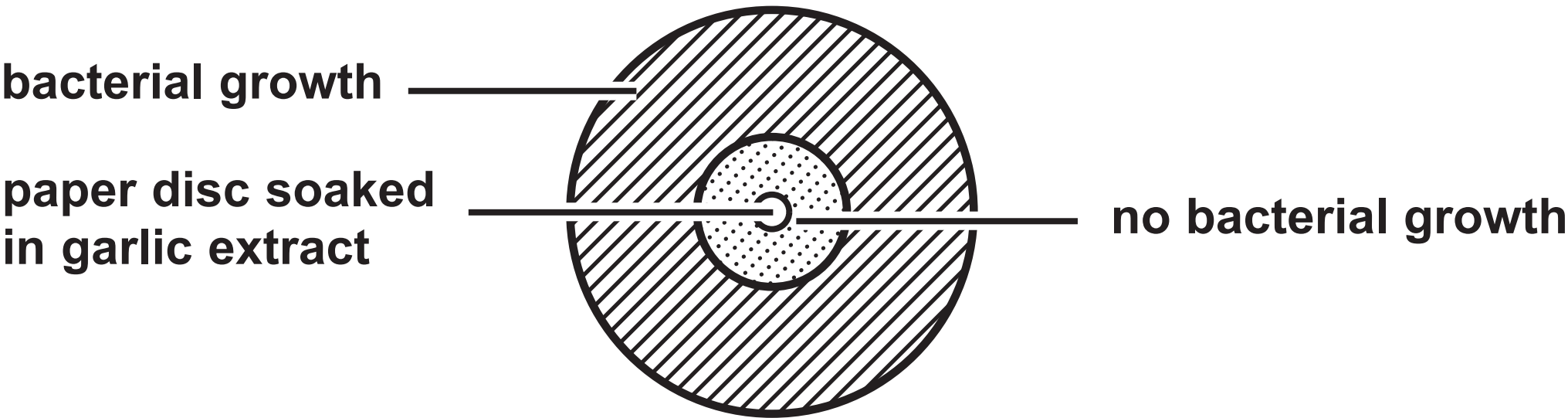
FIGURE 8

Percentage of people
who smoke cigarettes



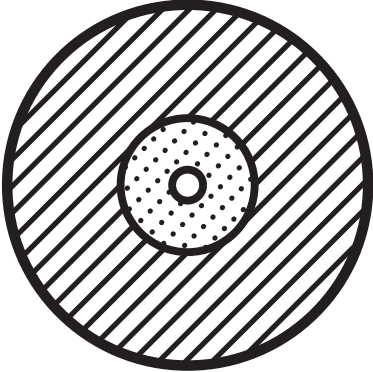
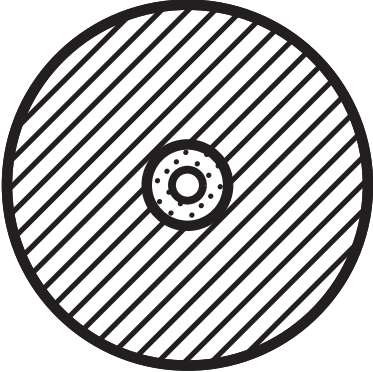
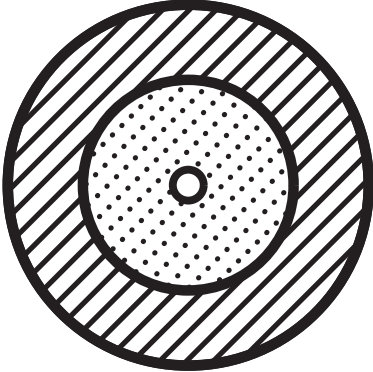
Question 5(a)

FIGURE 9



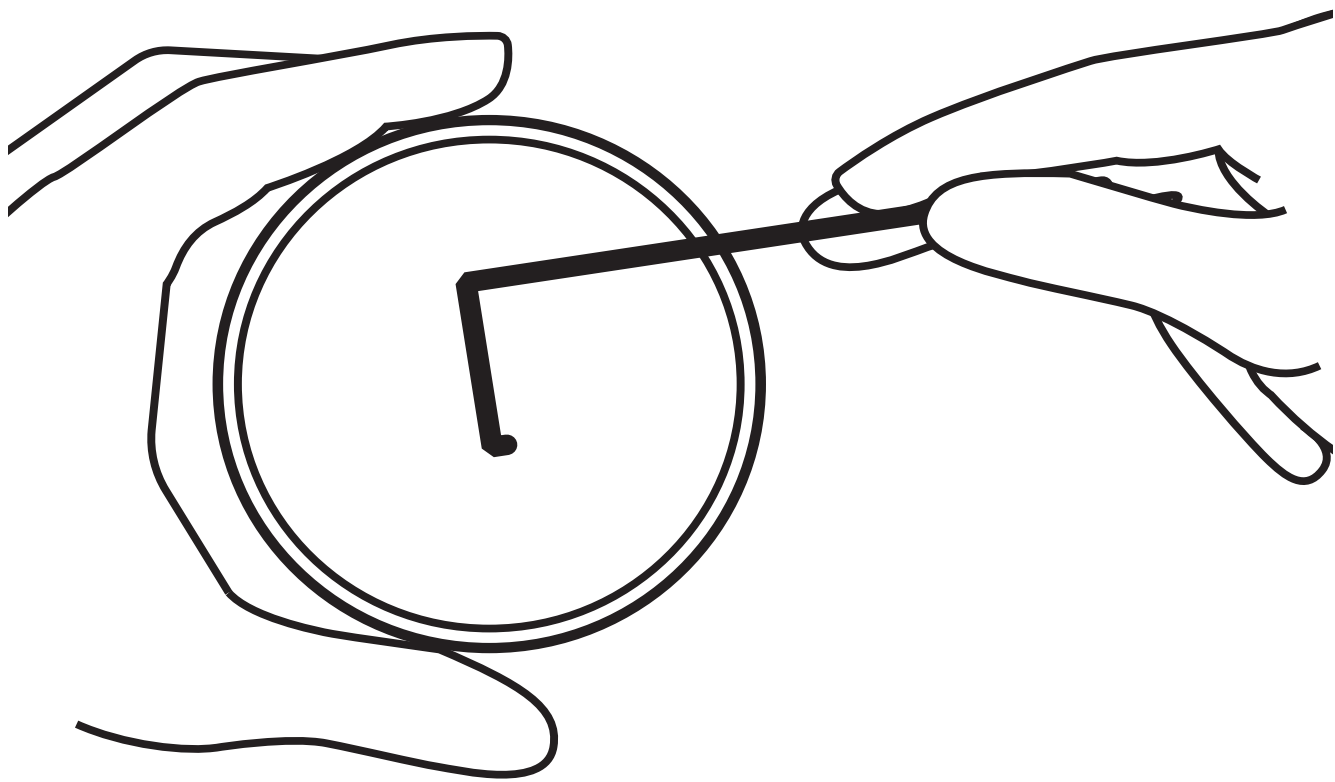
Question 5(a)(ii)

FIGURE 10

appearance of the agar plates after 24 hours		
A	B	C
		

Question 5(b)

FIGURE 11

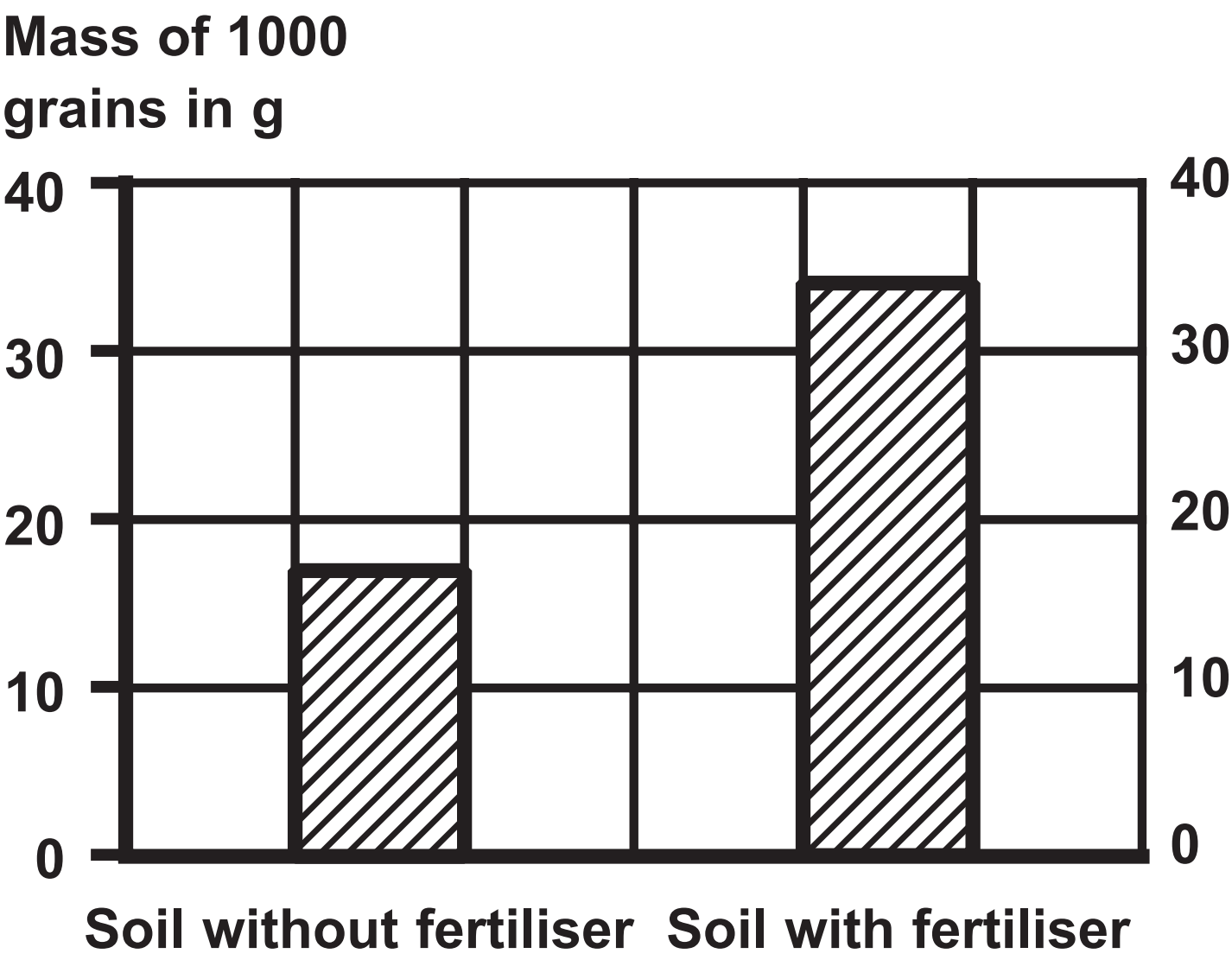


Question 6(b)

		wrinkled seeds	
round seeds	R		
	r		

Question 7

FIGURE 13



Question 7(c)(ii)

FIGURE 14

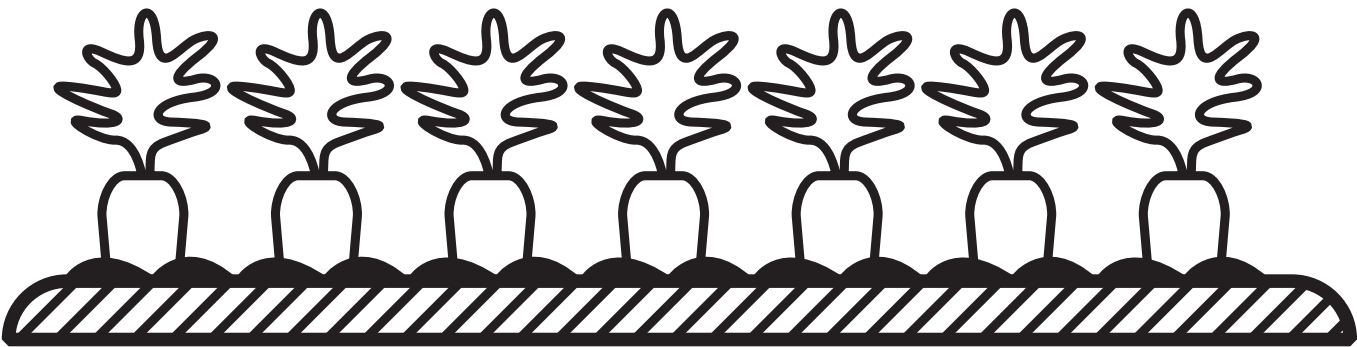
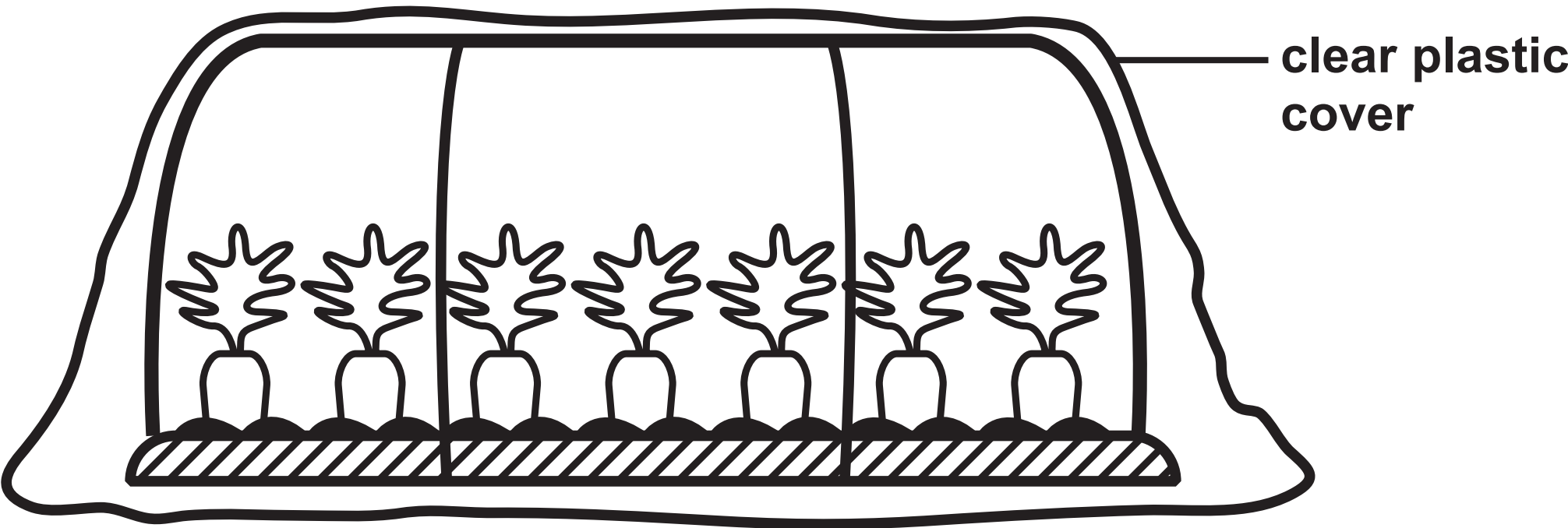


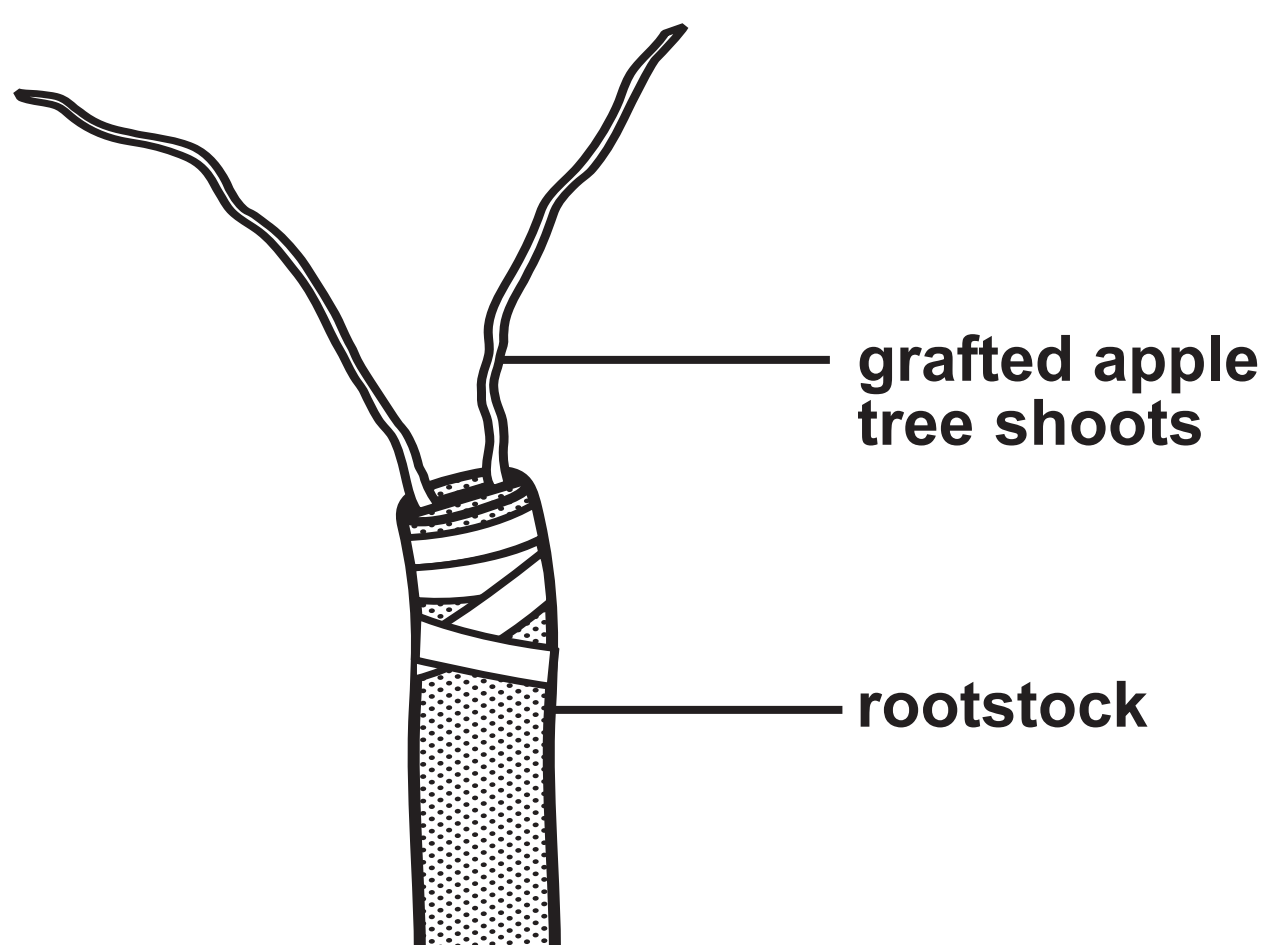
FIGURE 15

The black and white photograph shows an adult maggot and a maggot larva feeding on rotting corn.



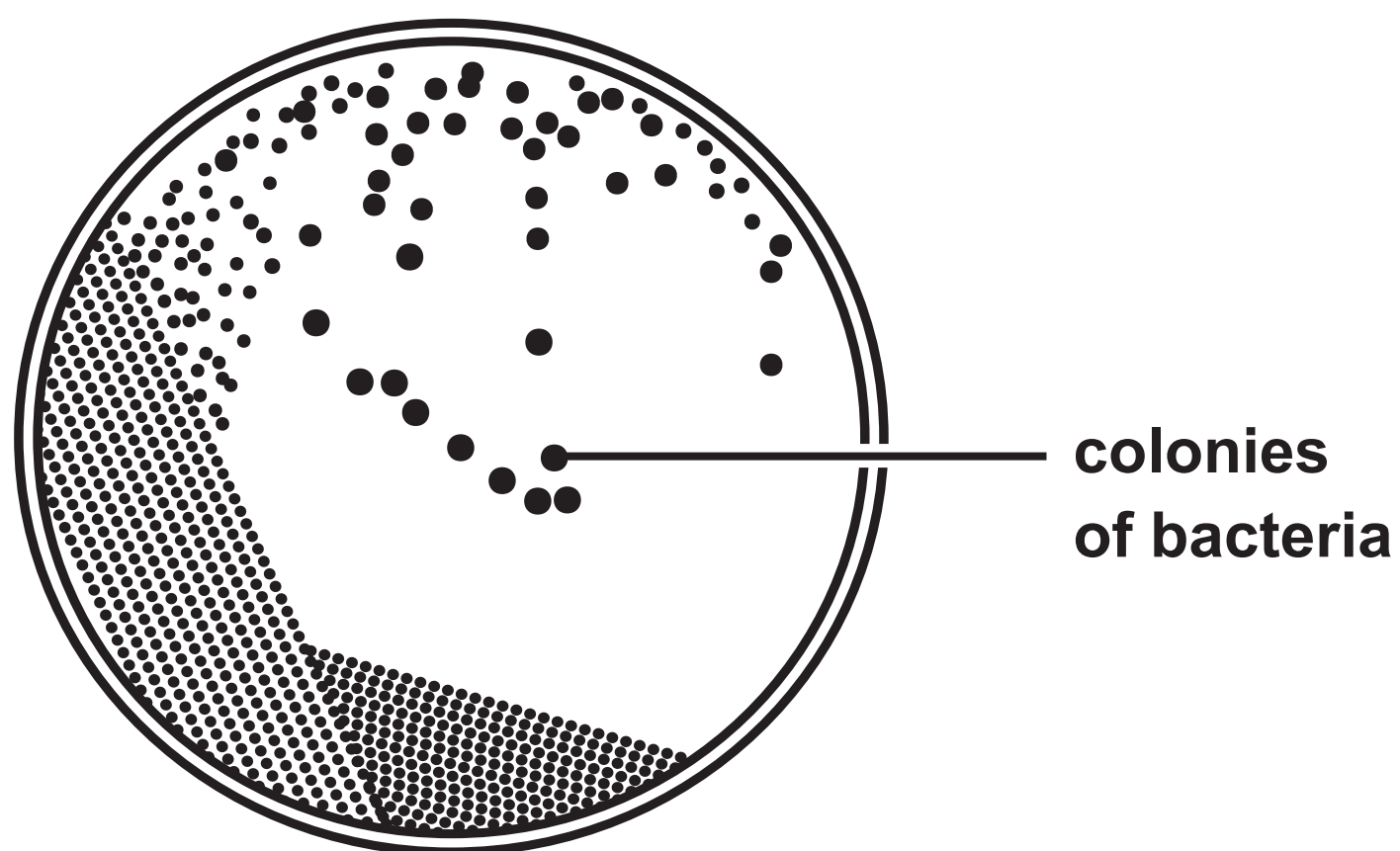
Question 8(c)

FIGURE 16



Question 9(a)

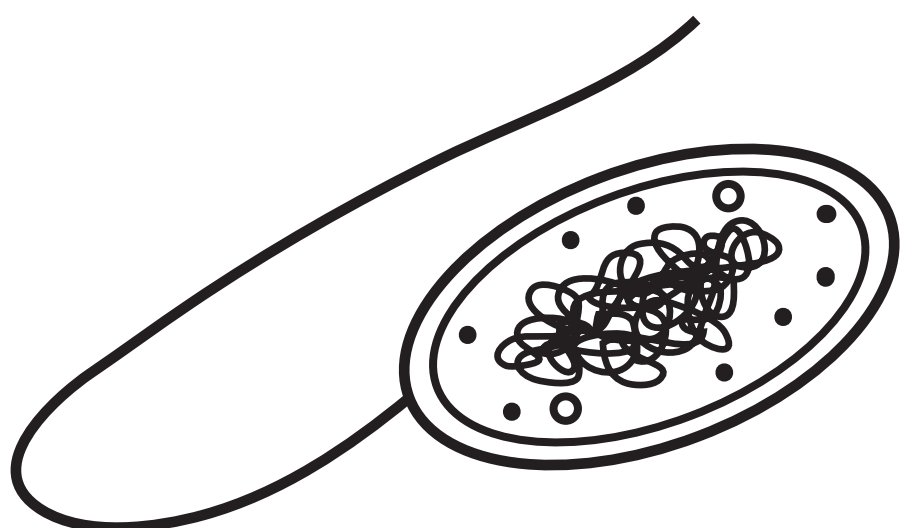
FIGURE 17



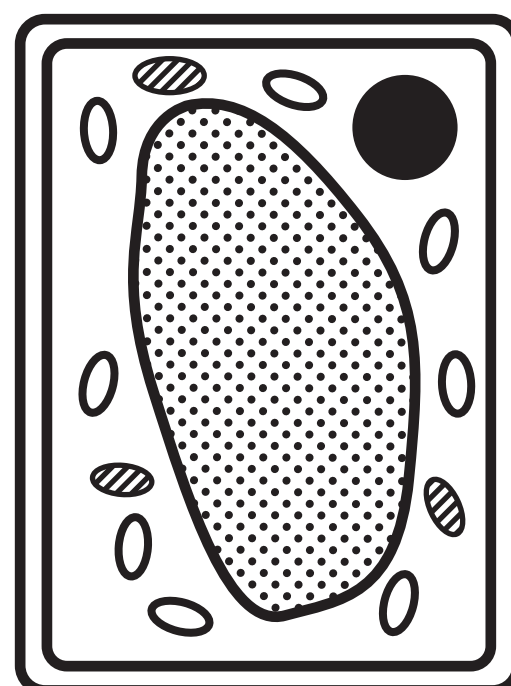
Question 9(c)

FIGURE 18

bacterial cell



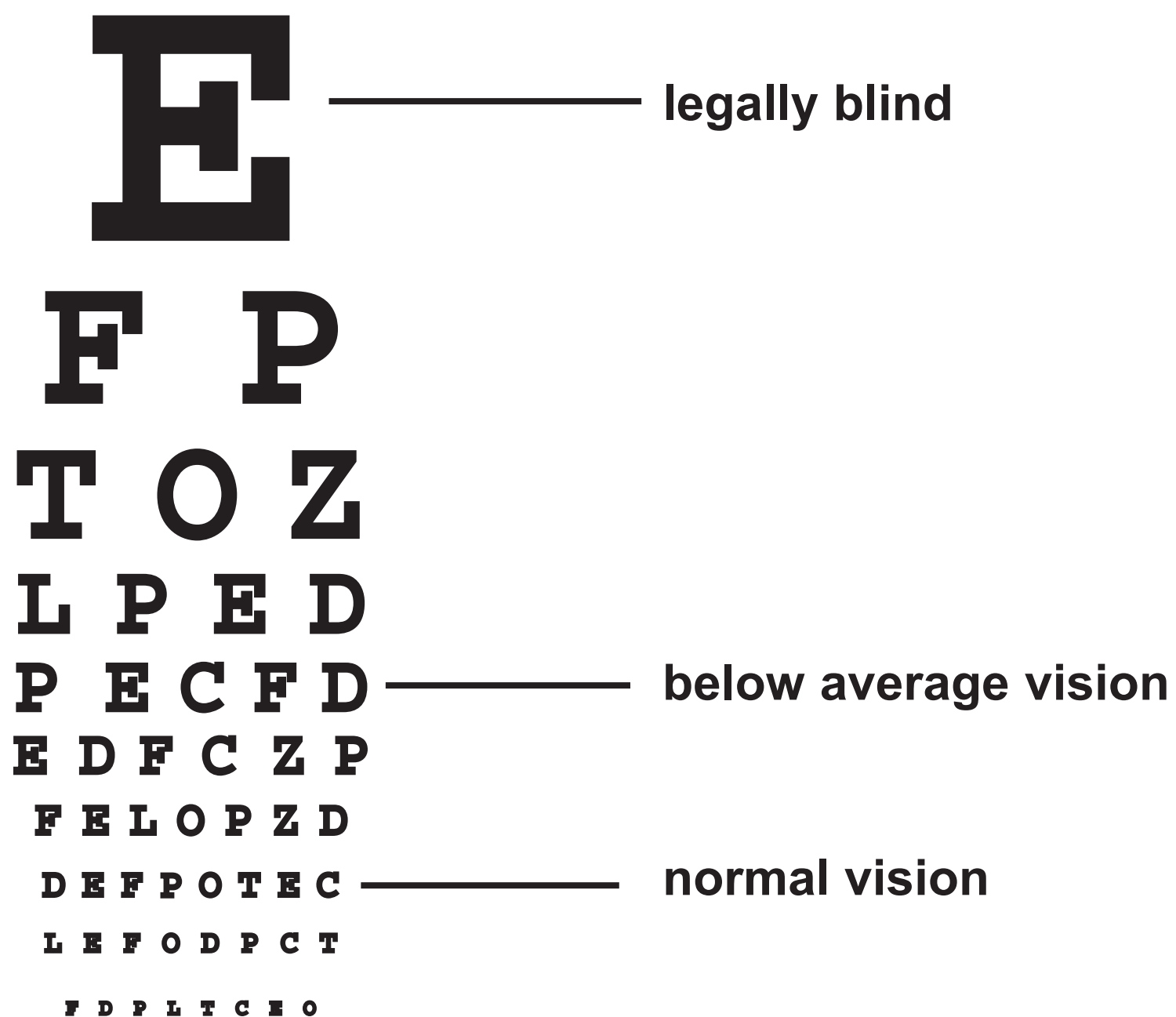
plant cell



Question 10(a)

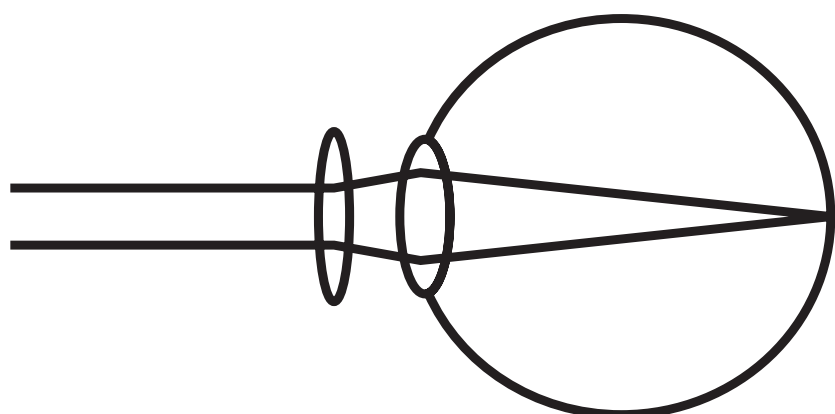
The image shows a reading chart in order of size, becoming progressively smaller. From top to bottom: very large print with a single letter to fine print with 8 letters.

FIGURE 19

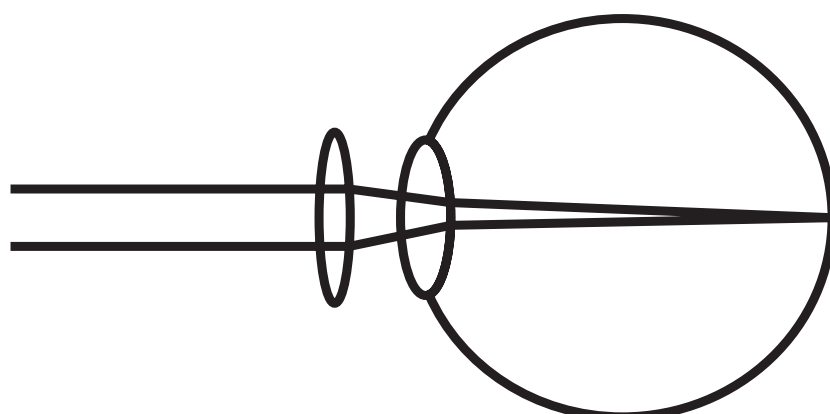


Question 10(a)(iii)

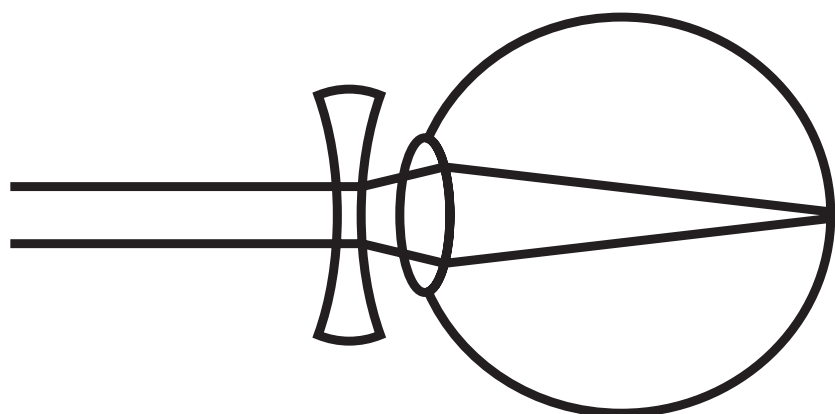
A



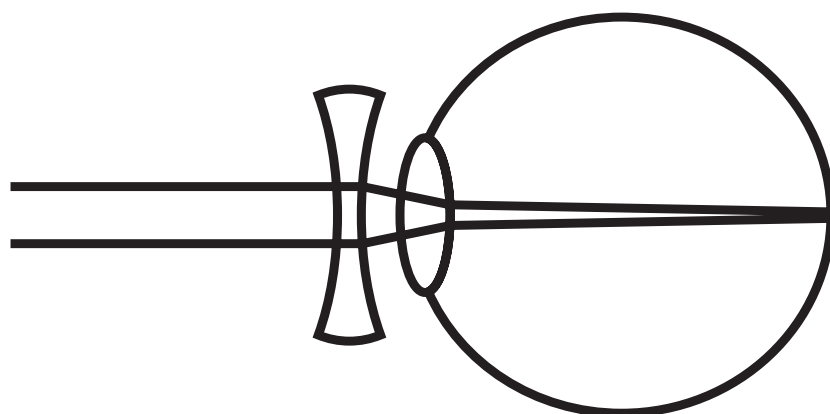
B



C

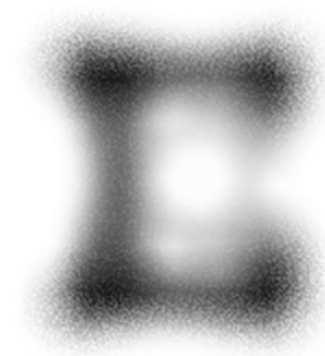


D



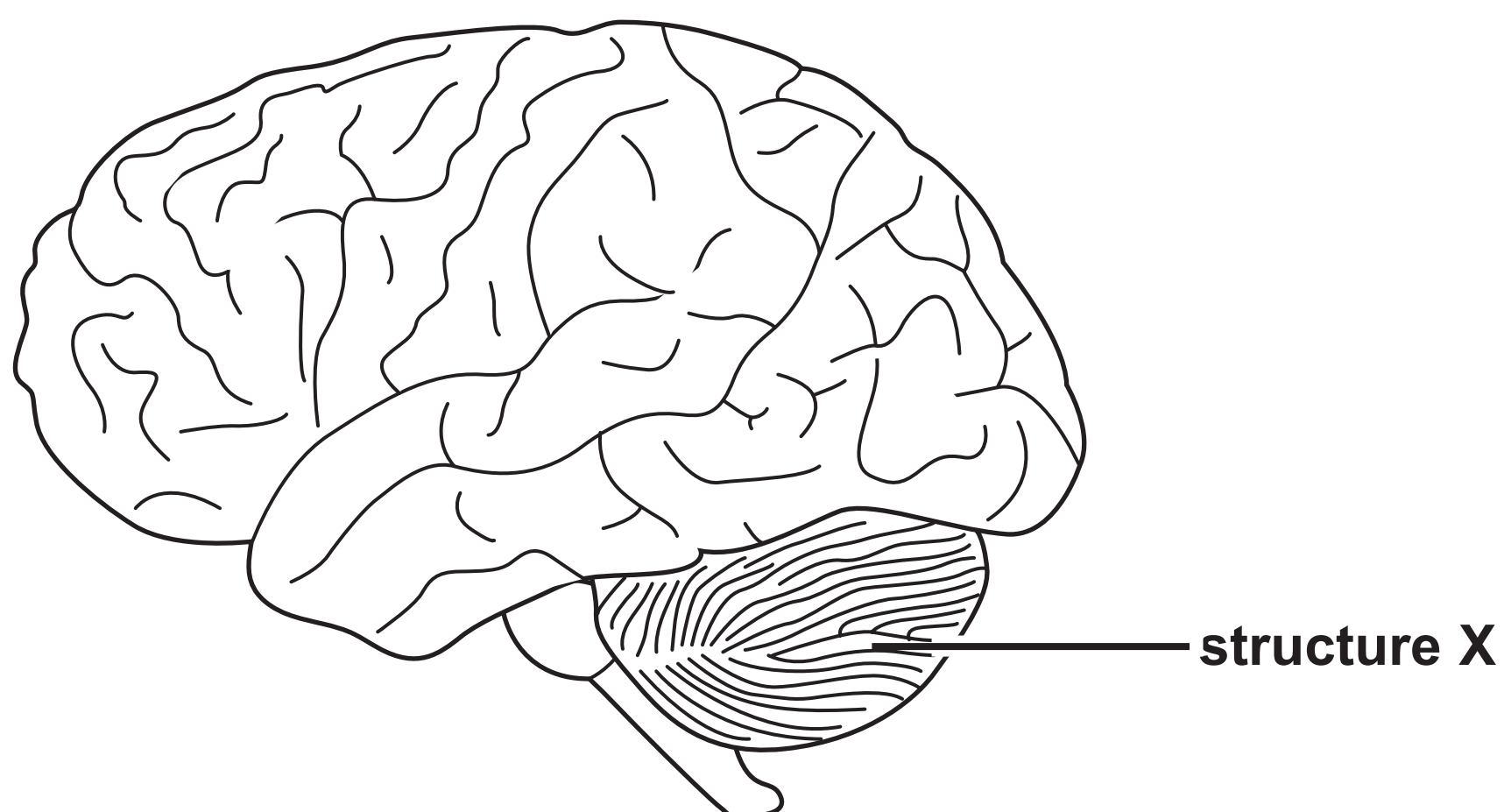
Question 10(b)

Two images of block capital letter 'E' side by side. Person with normal vision is shown as a solid, legible letter 'E' with no defects. Person with cataracts is shown as a strongly blurred image, the letter is smaller than at normal vision, with the four corners of the letter the most defined areas.

FIGURE 20**person with normal vision****person with cataracts**

Question 10(c)(i)

FIGURE 21



Question 1(b)(ii)

FIGURE 3

part of the
microscope

eyepiece ●

stage ●

function

● to place a slide on

● to carry the
microscope

● to make the cells
look brighter

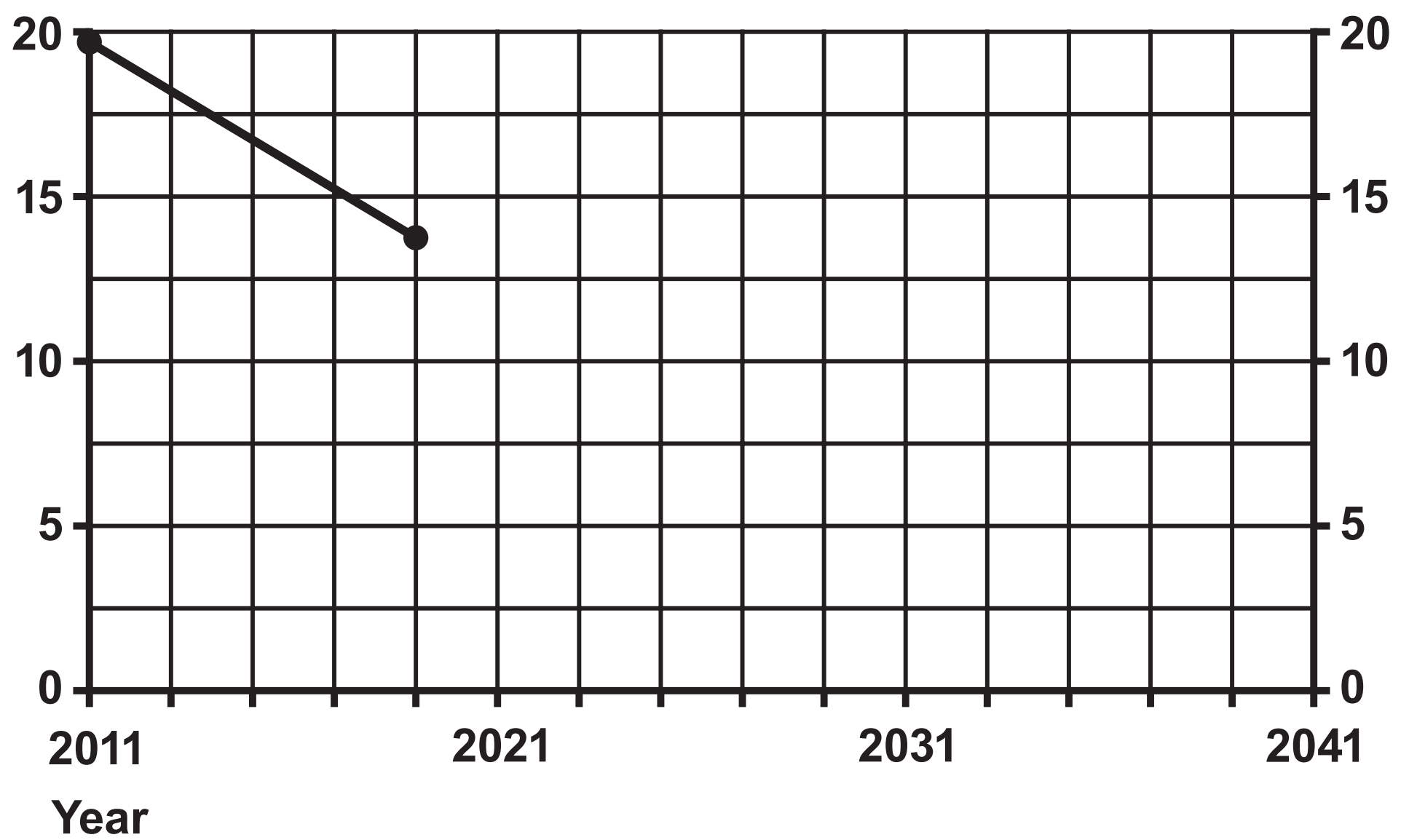
● to look through to
see the cells

● to reflect light
onto the cells

Question 4(c)

FIGURE 8

Percentage of people
who smoke cigarettes



Question 6(b)

		wrinkled seeds	
round	R		
seeds	r		

Question 1(b) : Adapted from © RouDhi/Shutterstock

Question 2(a)(ii): Adapted from © Yes058 Montree Nanta/Shutterstock

Question 5(b) : Adapted from © Chatchouliya/Shutterstock

Question 7(d) : © Tomasz Klejdysz/Shutterstock

Question 8(c) : Adapted from © ATTILA Barsan/Shutterstock

Question 9(a) : Adapted from © Chatchouliya/Shutterstock